

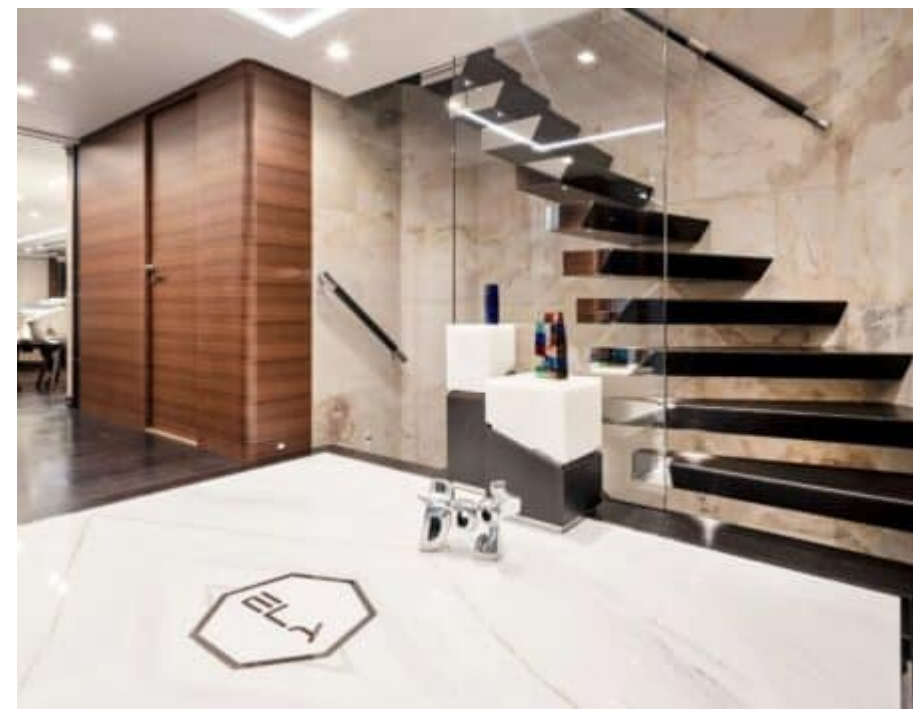




PELAGIA
YACHTING

M/Y ELA

- Air conditioning
- Bow thruster
- Exterior lunch table
- Hydraulic gangway
- Kitchen
- Sound System
- Stern thruster
- Sunbeds
- Television
- Washing machine
- Watermaker
- Bar
- Beach Club
- Dishwasher
- Dryer machine
- Gym Kit
- Jacuzzi
- Laundry room
- Outdoor Cinema
- Sauna
- Stabilisers at anchor
- Stabilisers underway
- Tender
- Wifi
- Wine cellar



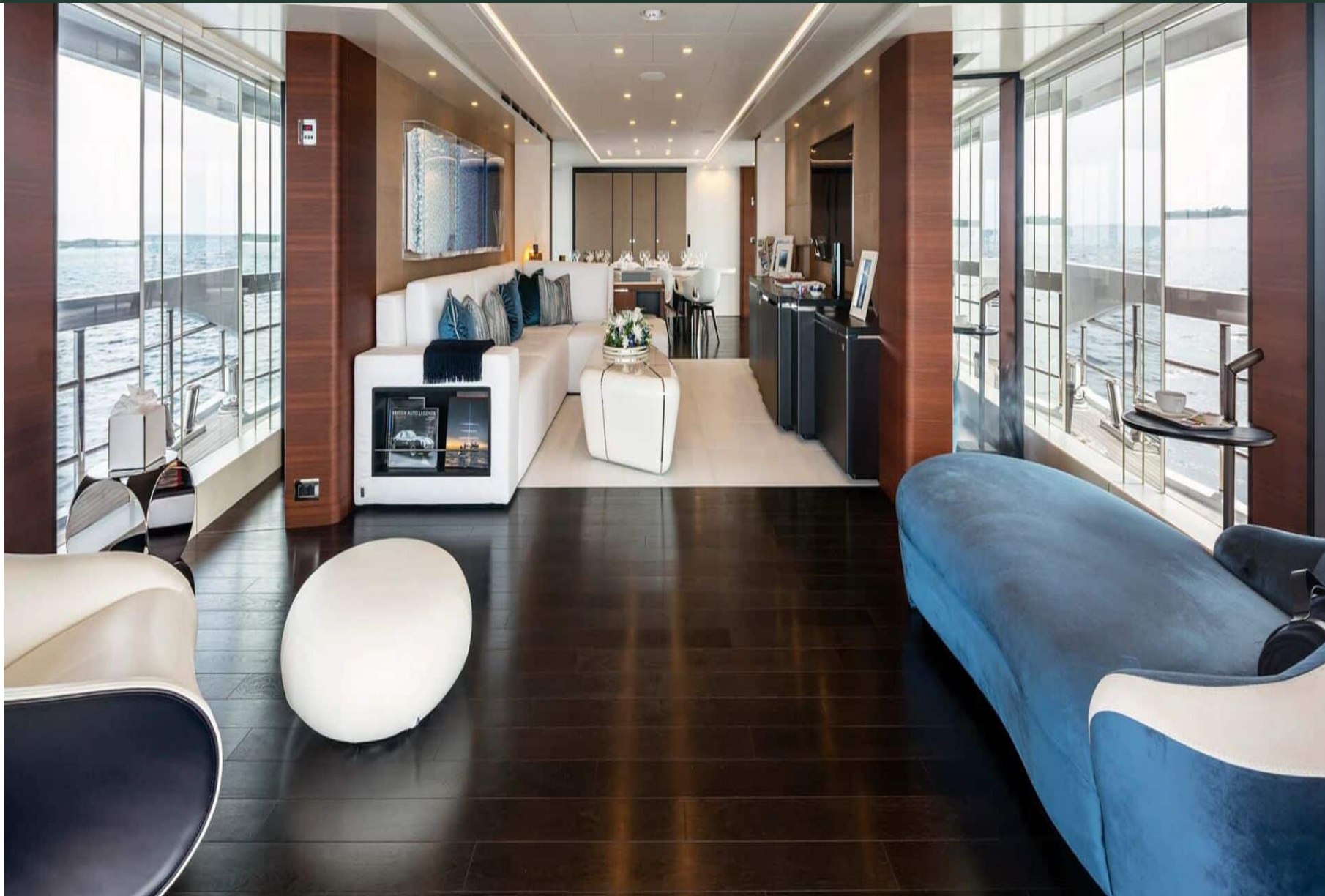
DESIGN EXTÉRIEUR



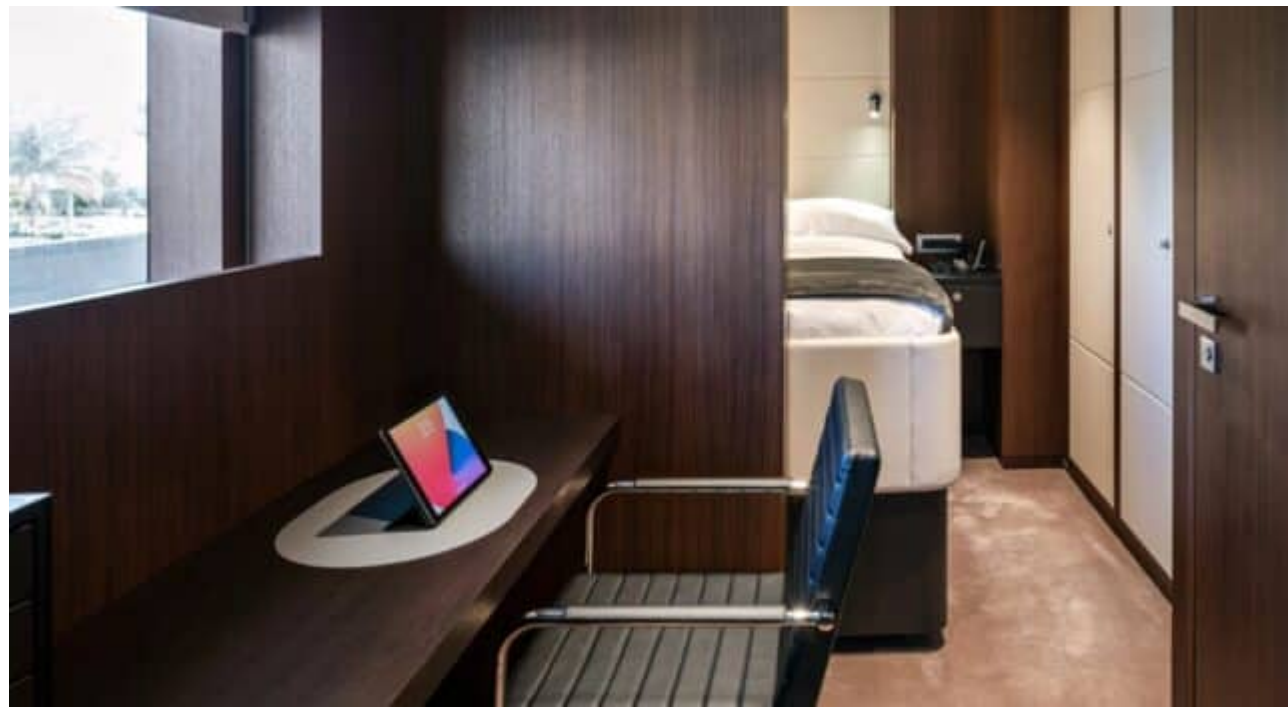




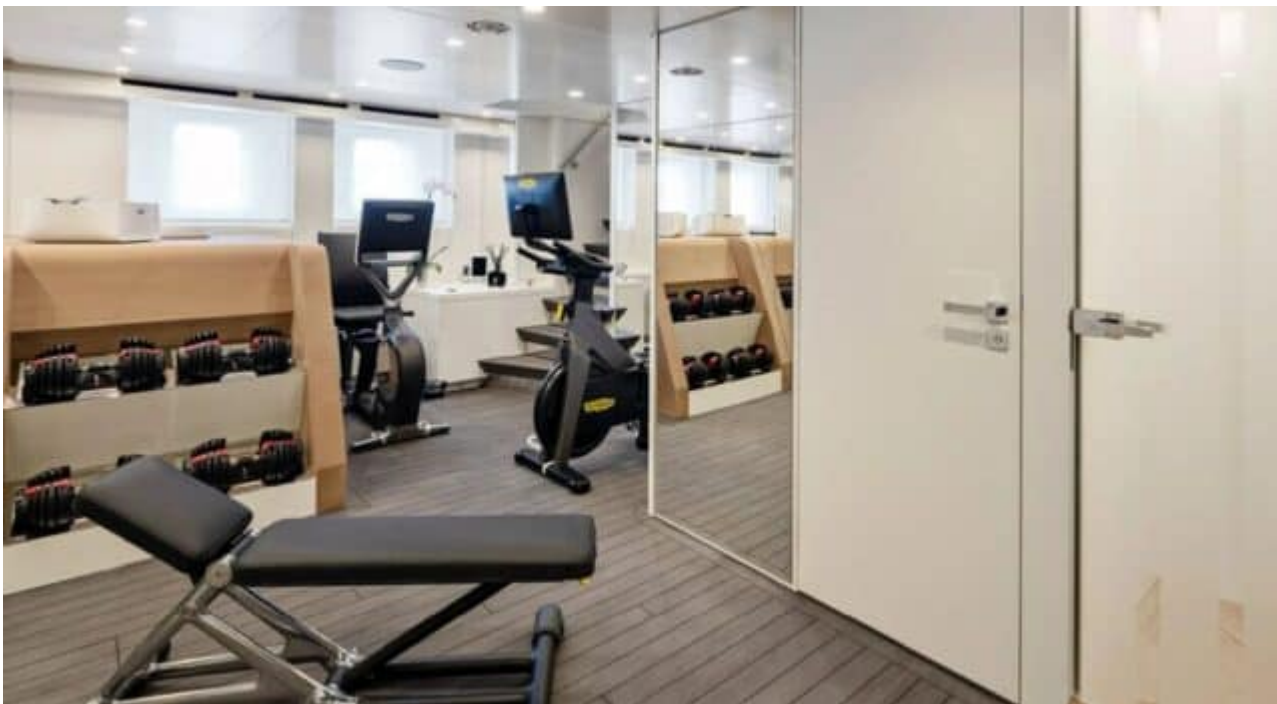
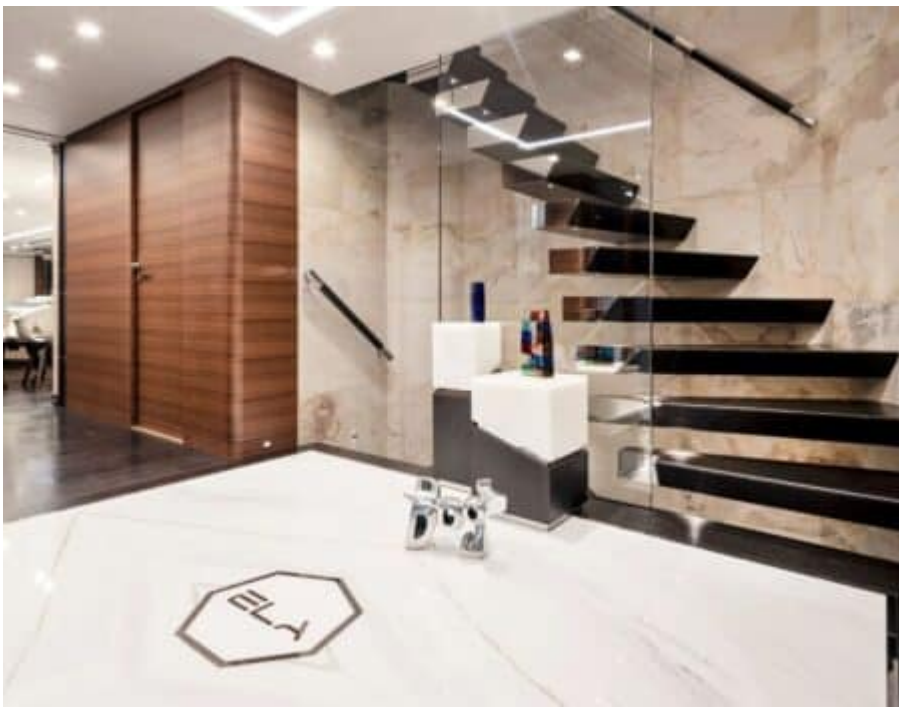
DESIGN INTÉRIEUR











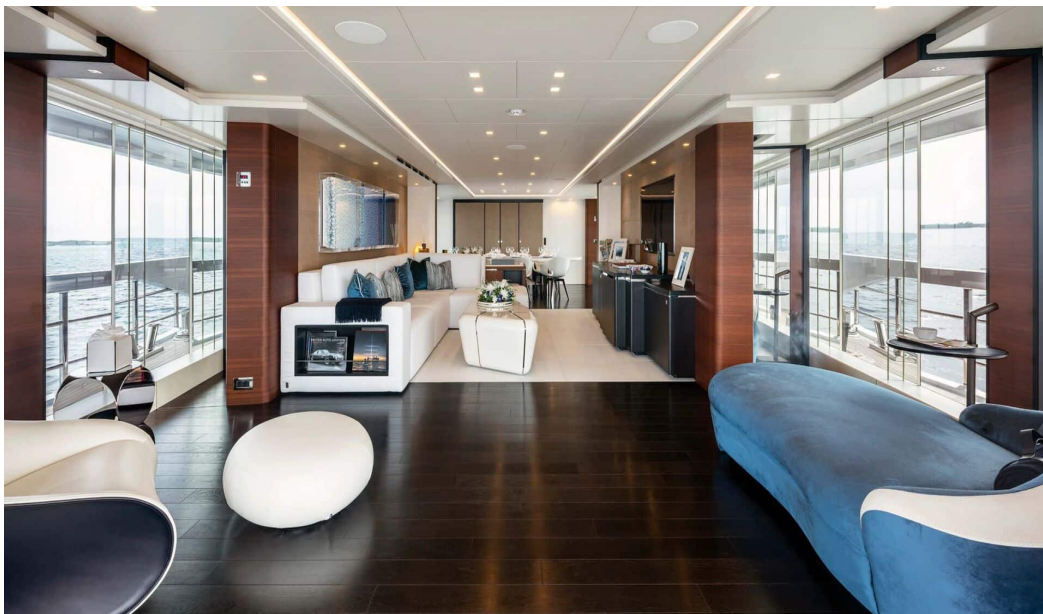
Description



Embark on a journey of luxury and opulence with the Motor Yacht – Flybridge M/Y ELA. Crafted by renowned yacht builder Heesen, this magnificent vessel offers a unique experience like no other in the world. With a price tag of \$38,500,000, M/Y ELA is a true masterpiece at sea.

Measuring 49.99 meters in length and boasting 6 lavish cabins that can accommodate up to 12 guests, this ship exudes sophistication and elegance. Equipped with top-of-the-line amenities such as air conditioning, a jacuzzi, gym kit, outdoor cinema, sauna, watermaker, wine cellar and more – every detail has been carefully curated to provide the utmost comfort and luxury.

Pelagia Yachting is your partner in purchasing this exceptional yacht. With tailor-made services and a team of dedicated professionals who are experts in the yachting industry, Pelagia Yachting ensures a seamless buying process from start to finish. Don't miss out on the opportunity to own one of the most prestigious motor yachts on the market – contact Pelagia Yachting today for more information on purchasing M/Y ELA.



Spécifications

Vue d'ensemble



Prix	38 500 000\$
Constructeur	Heesen
Type de yacht	Motor Yacht - Flybridge
Pavillon	Marshall Islands
TVA	Non payé
Année de construction	2021

Dimensions



Longueur	49.99 m / 164.01 ft.
Largeur	9.09 m / 29.82 ft.
Tirant d'eau	2.16 m / 7.09 ft.
Tonnage brut	499

Construction



Construction coque	Aluminium
Statut	Commercial
Classification	ABS

Performances et capacités



Vitesse maximale	19.5 knots
Vitesse de croisière	14.5 knots
Réservoirs de carburant	45000 L
Water Tank	16000 L

Moteur & Générateur



x2 MTU 1,448 HP/CV

Hébergement



Invités pouvant dormir	12
Cabines	6