





PELAGIA  
YACHTING

# M/Y CRAZY TOO



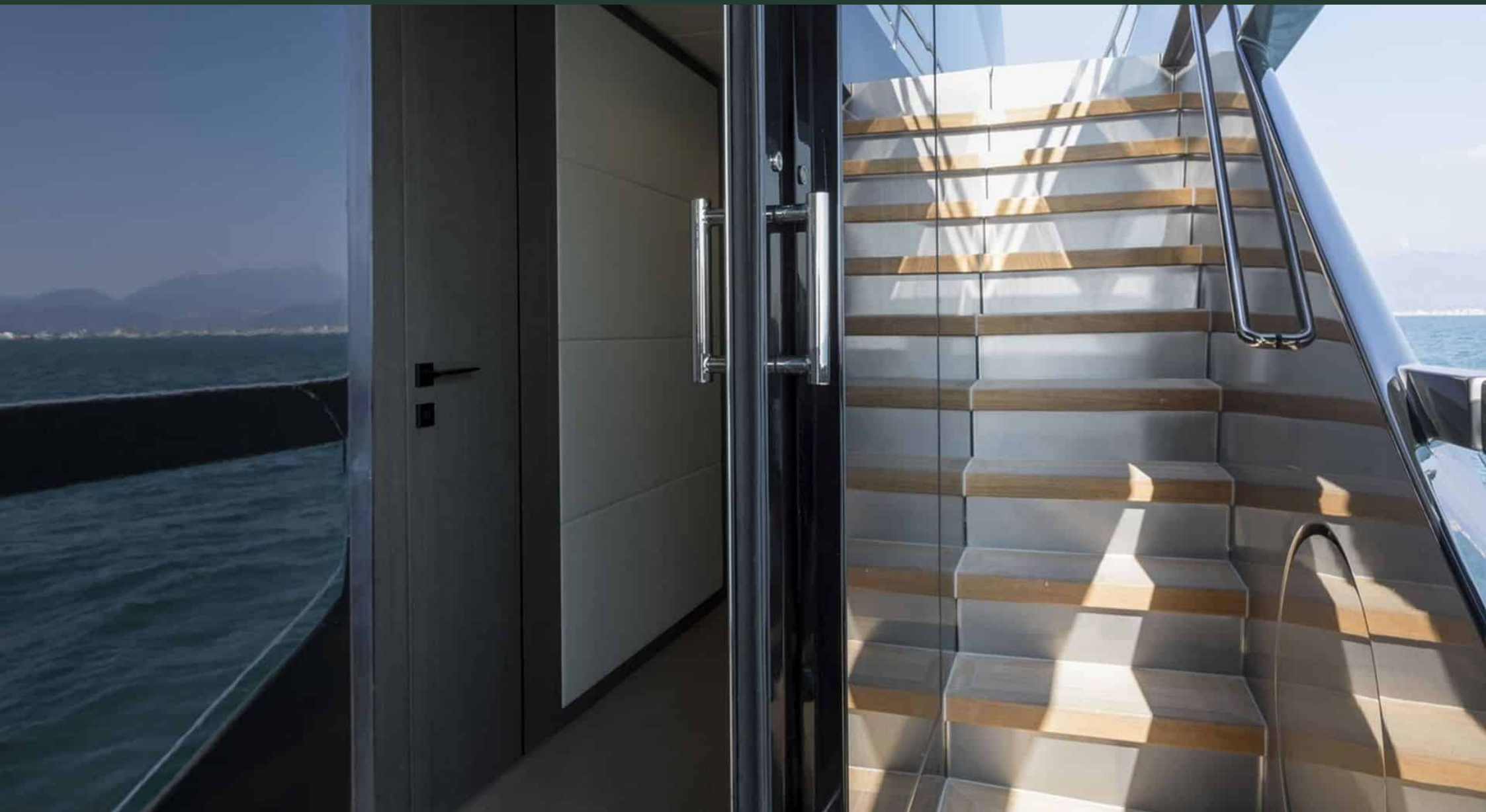
Beach Club



Tender



# EXTERIOR DESIGN















# INTERIOR DESIGN





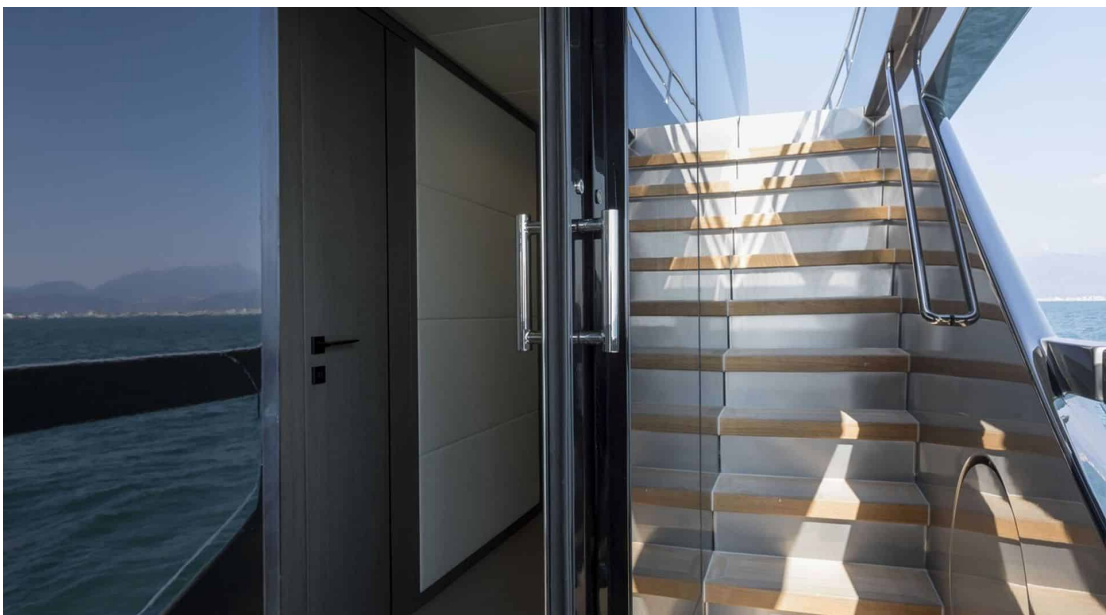








# Description



Embark on the journey of a lifetime with the Motor Yacht - Flybridge M/Y CRAZY TOO. Crafted by Overmarine, this luxurious yacht is a true masterpiece on the waters. With a flag from France waving proudly, this yacht exudes sophistication and elegance. The price tag of 12000000 € reflects the superior quality and craftsmanship that has gone into making this vessel one of the best on the market.

Step aboard and be greeted by five cabins designed to provide ultimate comfort and relaxation for up to 10 guests. The sleek design of this 33.3m long yacht will leave you breathless as you cruise through the crystal-clear waters at a cruising speed of 19 knots, with a maximum speed of 25 knots powered by x4 VOLVO Penta D13-1000 IB engines. Enjoy all the water toys available on board, including Jetskis, Kayaks, Paddle Boards, Seabobs, Wakeboards, and more for an unforgettable yachting experience.

Pelagia Yachting offers tailor-made services to ensure that your purchase of M/Y CRAZY TOO is nothing short of exceptional. Their team of experts will guide you through every step of the purchasing process, providing all necessary information and support along the way. Don't miss out on this unique opportunity to own one of the most prestigious Motor Yachts - Flybridge in the world. Contact Pelagia Yachting today for more information and start living your dream life on board M/Y CRAZY TOO!



# Specifications

## Overview



|            |                            |
|------------|----------------------------|
| Price      | 12 000 000€                |
| Builder    | Overmarine                 |
| Yacht type | Motor Yacht -<br>Flybridge |
| Flag       | French                     |
| VAT        | VAT not paid               |
| Year built | 2022                       |

## Dimensions



|               |                        |
|---------------|------------------------|
| Length        | 33.3 m / 109.25<br>ft. |
| Beam          | 7.4 m / 24.28 ft.      |
| Draft         | 1.9 m / 6.23 ft.       |
| Gross Tonnage | 228                    |

## Construction



|                   |            |
|-------------------|------------|
| Hull Construction | GRP        |
| Statut            | Commercial |
| Classification    | RINA       |

## Performances & Capacities



|                |          |
|----------------|----------|
| Max Speed      | 25 knots |
| Cruising Speed | 19 knots |
| Fuel Tanks     | 10500 L  |
| Water Tank     | 2000 L   |

## Engine & Generator



x4 VOLVO Penta D13-1000 IB - 735kW  
(~1000HP/CV)

## Accommodation



|                          |         |
|--------------------------|---------|
| Guest Sleeping<br>Cabins | 10<br>5 |
|--------------------------|---------|